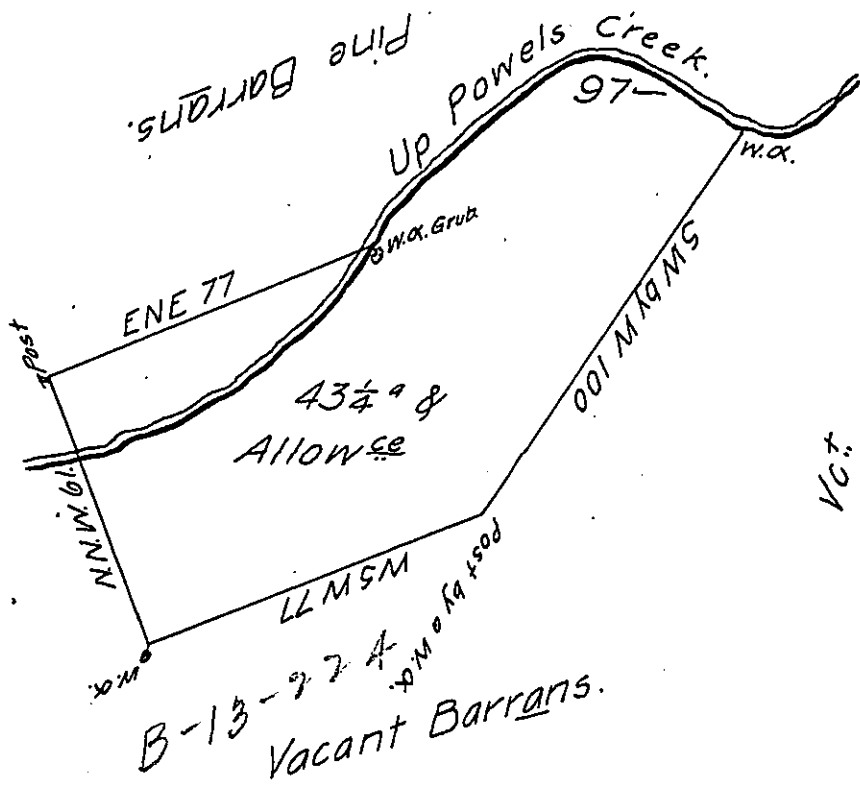


Application No. 531. dated August 16th 1765.



Survey'd to Ephraim Moore on the 16th day of October the above
 discribed Forty-three Acres & a Quarter & the Usual allowance of 6
 @ C^t Situate on Powels Creek over the Blue Mountains in Lancaster
 County. By Application of the — day of — 1765 No. —

By Bartrem Galbraith, D.S.

To John Lukens Esq^r }
 Surv^r Genl

IN TESTIMONY that the above is a copy of the original remaining on file in
 the Department of Internal Affairs of Pennsylvania, made
 conformably to an Act of Assembly approved the 16th day of
 February, 1833, I have hereunto set my Hand and caused
 the Seal of said Department to be affixed at Harrisburg,
 this twenty eighth day of December 1905.

Quac R. Brown
 Secretary of Internal Affairs.